

Low Tide

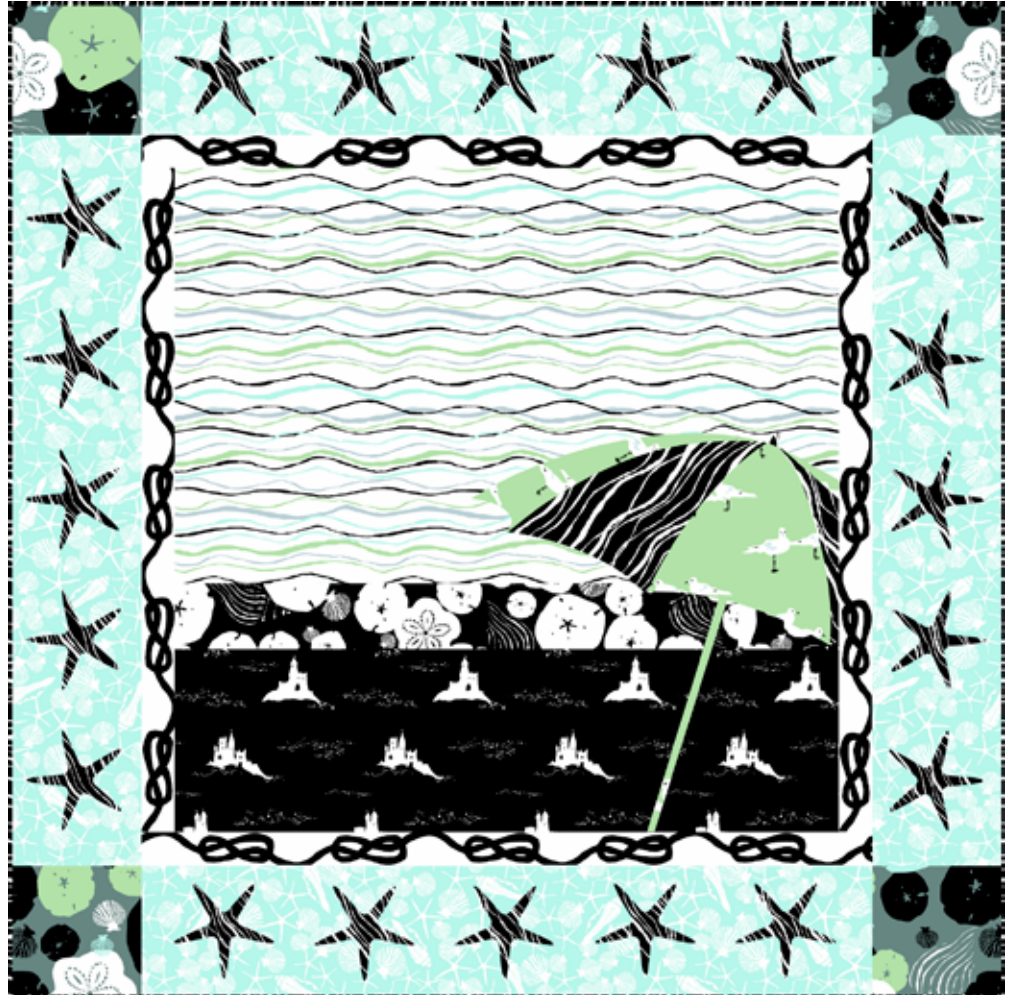
FABRICS BY JANE DIXON



Seaside Vacation at Dusk
Quilt Design by:
Pink Hippo Quilts

Quilt Size: 60" x 60"

andoverfabrics.com



About Low Tide

Low Tide features the soft colors and peaceful mood of the evening tide. Sea gulls chase the water outward, pecking at the bubbles in the sand. Salty water ebbs, exposing white shards of tiny shells and broken coral. The sandcastle, a mini kingdom, oversees the sand crabs and footprint puddles. All is safe from the wash of waves; a temporary reprieve is granted!

andover



makower uk
The Henley Studio

Free Pattern Download Available

1384 Broadway New York, NY 10018
Tel. (800) 223-5678 • andoverfabrics.com

Seaside Vacation at Dusk



Introducing Andover Fabrics new collection: **LOW TIDE** by Jane Dixon

Quilt designed by Pink Hippo Quilts

Quilt finishes 60" x 60"

Bring back fond memories of building sand castles and collecting seashells at the beach with this easy-to-piece wall quilt. The cool, comforting pastel green and blue prints contrast with the bold black and white fabrics. The appliquéd umbrella adds a human element to the scene.

Cutting Directions

Note: Read assembly directions before cutting patches. All measurements are cut sizes and include ¼" seam allowances. Borders are cut the exact lengths required plus ¼" seam allowances. WOF designates the width of fabric from selvedge to selvedge (approximately 42" wide).

- Fabric A** Cut (4) squares 8½"
- Fabric B** Cut (1) strip 4½" x 40½", cut crosswise
- Fabric C** Cut (4) borders 8½" x 44½", cut lengthwise
- Fabric D** Cut (1) strip 11½" x 40½", cut so sand castles remain upright in quilt
- Fabric E** Cut umbrella patches 1a, 1b, 3a, 3b, 5, 7a, 7b
- Fabric F** Cut (2) borders 2½" x 44½", cut lengthwise
Cut (2) borders 2½" x 40½", cut lengthwise
- Fabric G** Cut (1) strip 25½" x 40½", cut lengthwise
- Fabric H** Cut umbrella patches 2a, 2b, 4a, 4b, 6
Cut (20) starfish
Cut (7) strips 2½" x WOF for binding
- Backing** Cut (2) panels 34" x 68", pieced to fit quilt top with overlap on all sides

Fabric Requirements

		Yardage	Fabric
Fabric A	corners	¼ yard	7551-G
Fabric B	setting	¼ yard	7551-K
Fabric C	border	1½ yards	7552-G
Fabric D	setting	1¼ yards	7553-K
Fabric E	umbrella	½ yard	7554-G
Fabric F	border	1½ yards	7555-K
Fabric G	setting	1¼ yards	7556-C
*Fabric H	umbrella, stars	1½ yards	7556-K
Backing		4 yards	7554-C

*includes binding

Making the Quilt

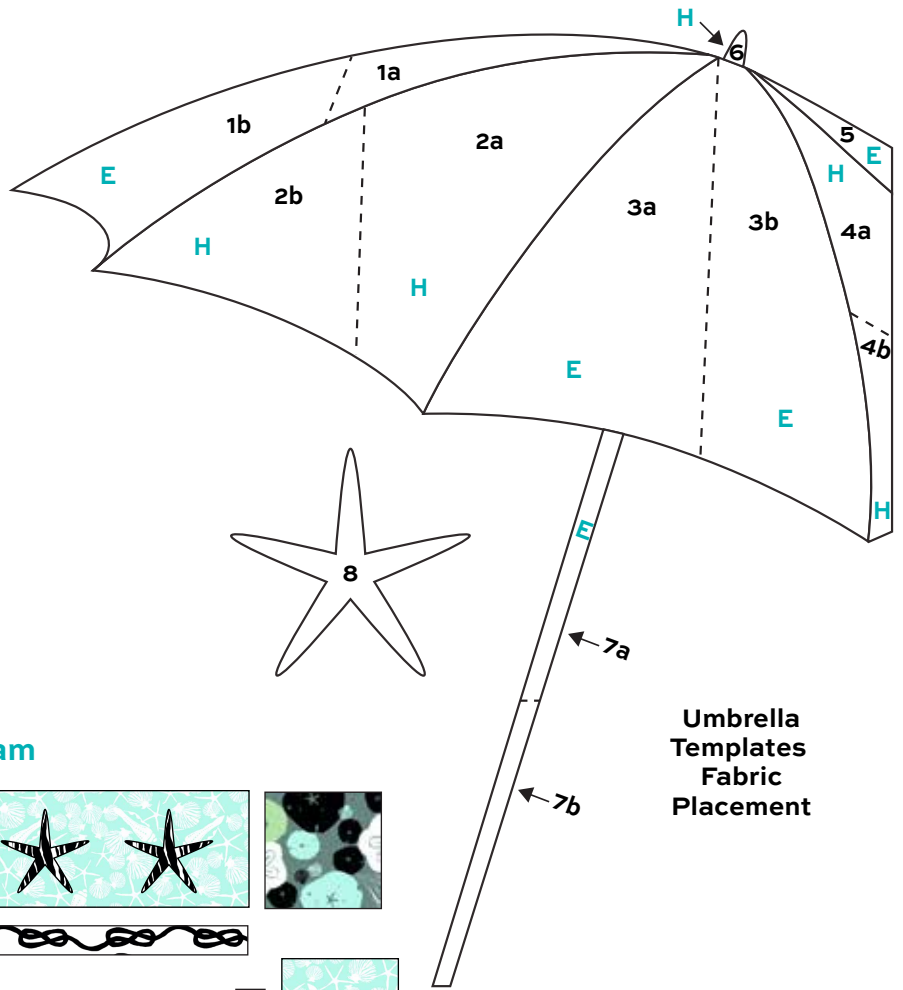
1. Referring to the Quilt Diagram, join Fabric G, B, and D strips to make the background.
2. Print the full-size umbrella patterns. Cut apart. Refer to the Umbrella Templates Fabric Placement. Tape 1a and 1b together along their dotted lines to make the complete pattern. Likewise, join patterns 2a/2b, 3a/3b, 4a/4b, and 7a/7b. Use your favorite method of appliqué to cut and prepare patches 1, 3, 5, and 7 from Fabric E. Patches 2, 4, and 6 are cut from Fabric H. Referring to the quilt photograph, position the umbrella on the quilt background, being certain that the bottom of the handle and the right side of the umbrella extend into the seam allowance. Finish the edges of the umbrella patches as you wish.
3. Sew shorter Fabric F borders to the sides, catching the side of the umbrella in the seam. Sew longer borders to the top and bottom, catching bottom of the handle in the seam.

Seaside Vacation at Dusk Quilt

- Prepare the starfish using your favorite appliqué method. Position 5 starfish on each Fabric C border, spacing them equally. Fuse or stitch the starfish to the borders. Finish edges as you wish.
- Sew Fabric C borders to the sides. Sew Fabric A squares to ends of remaining Fabric C borders. Sew to the top and bottom.

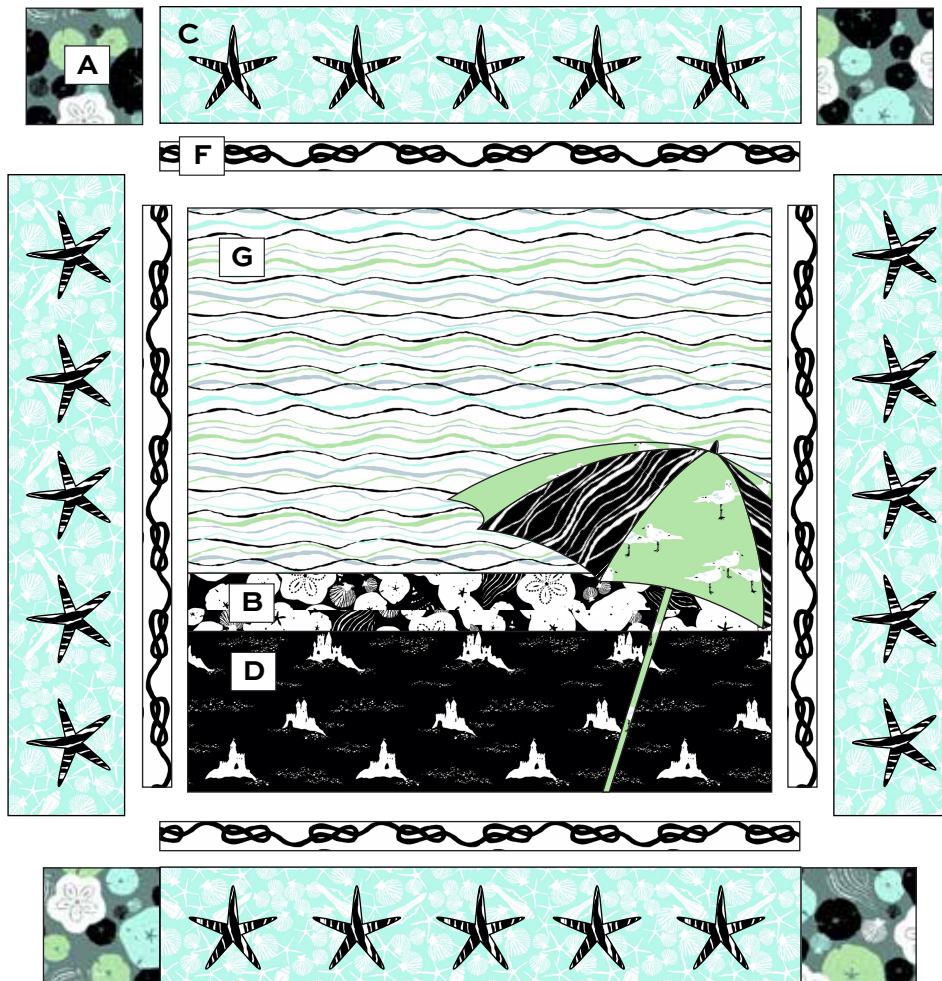
Finishing the Quilt

- Layer the quilt with batting and backing and baste. Quilt in the ditch around borders and appliqué patches. Quilt around the printed motifs in the background and borders. Bind to finish the quilt.

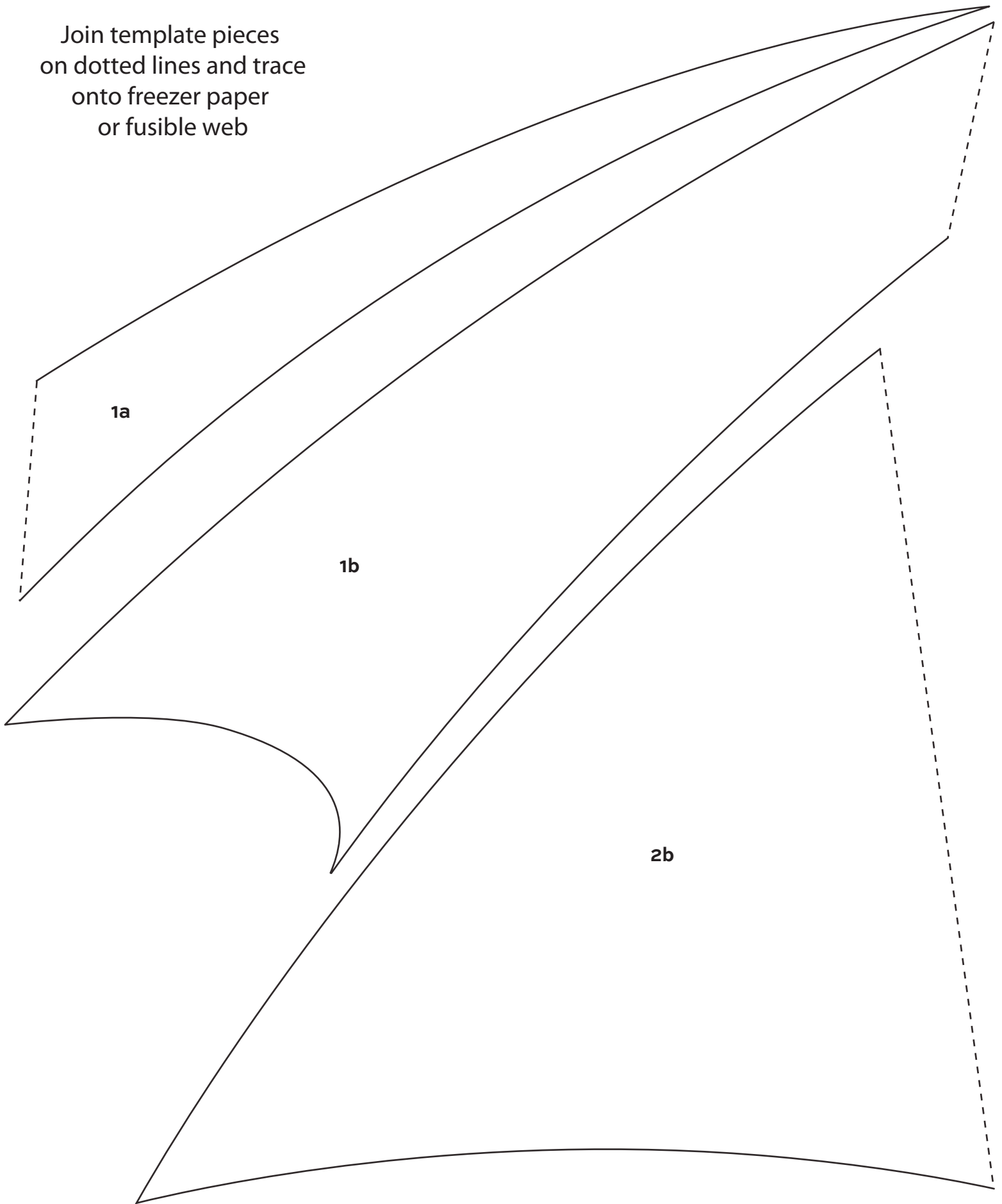


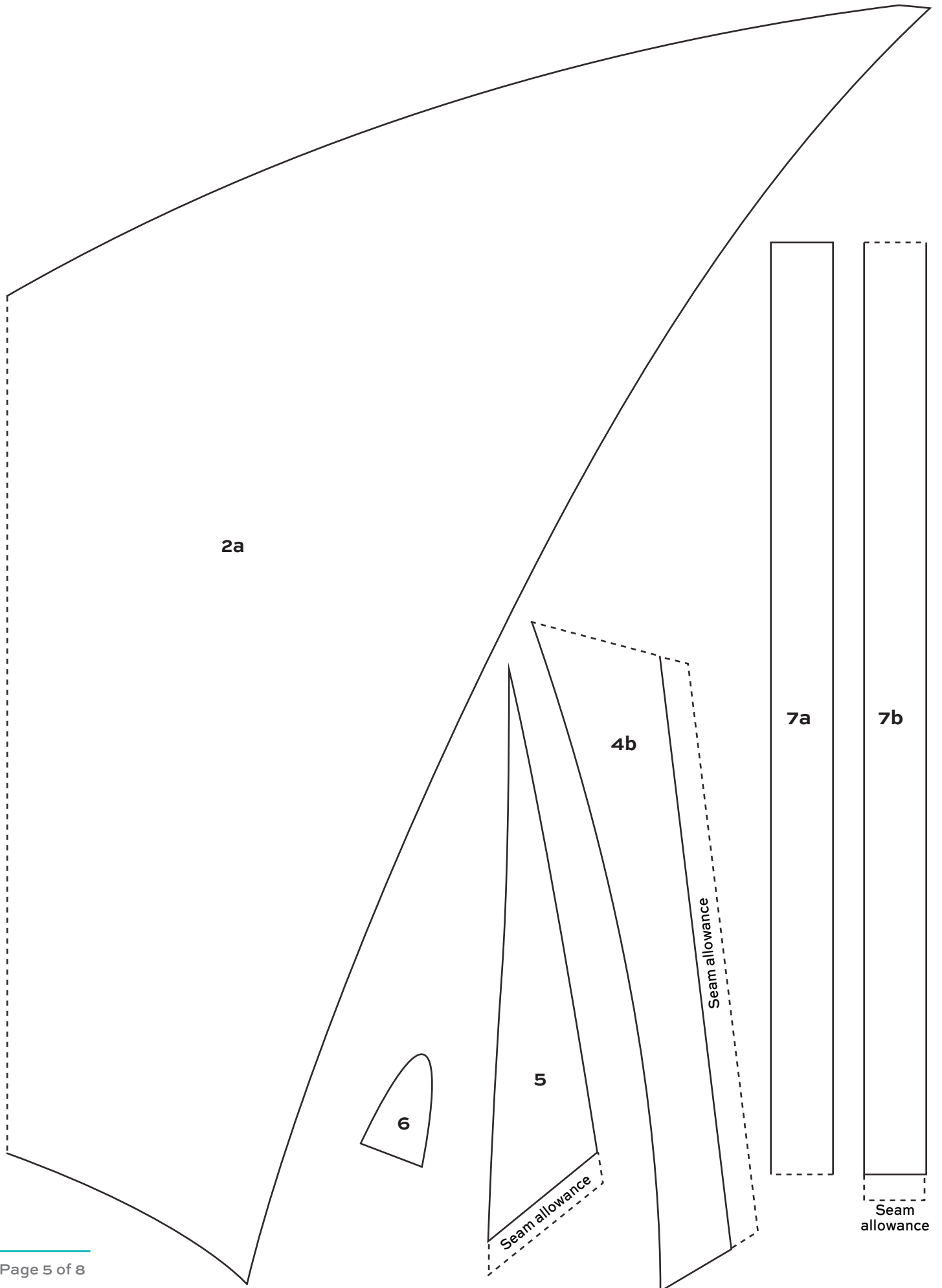
Umbrella
Templates
Fabric
Placement

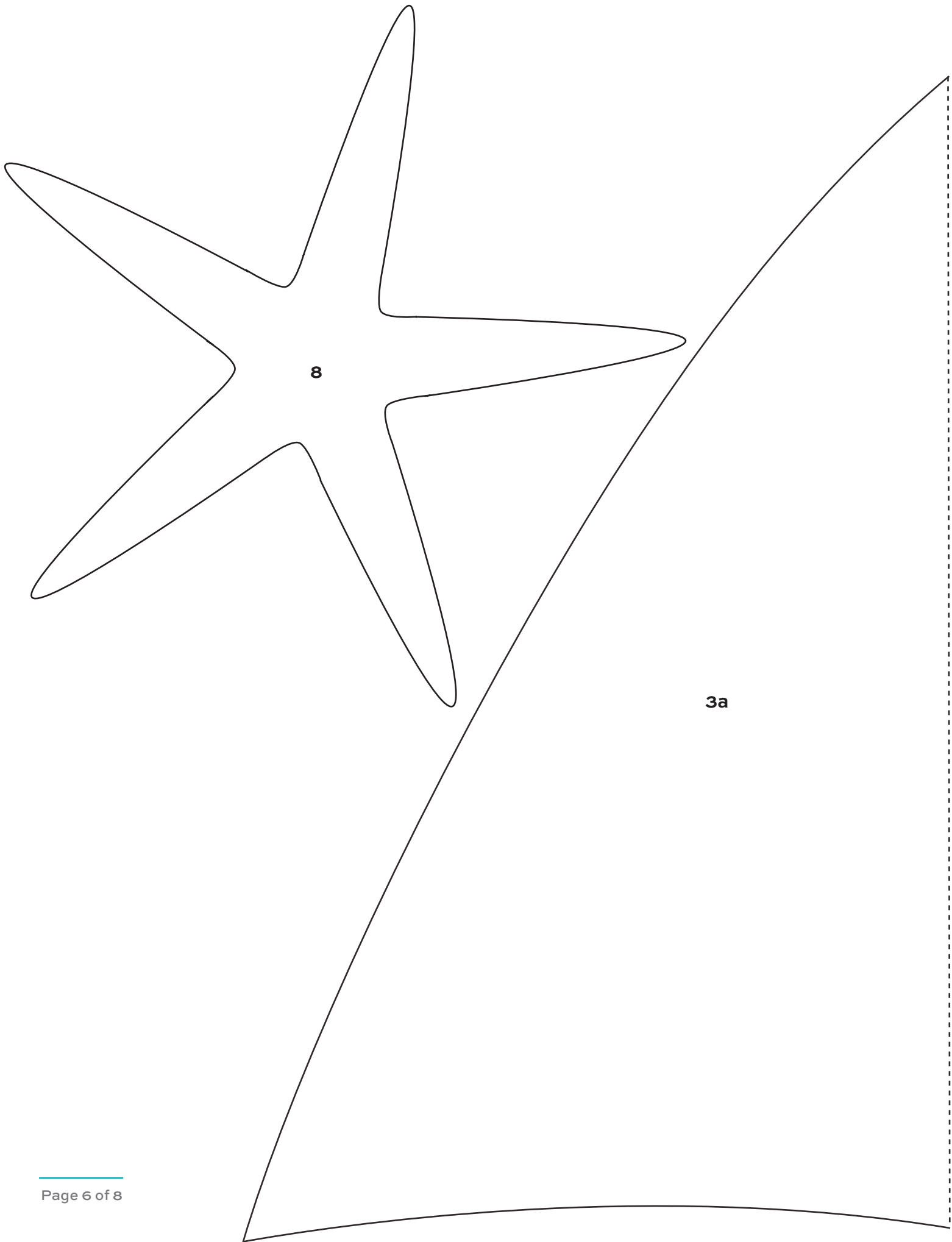
Quilt Diagram



Join template pieces
on dotted lines and trace
onto freezer paper
or fusible web

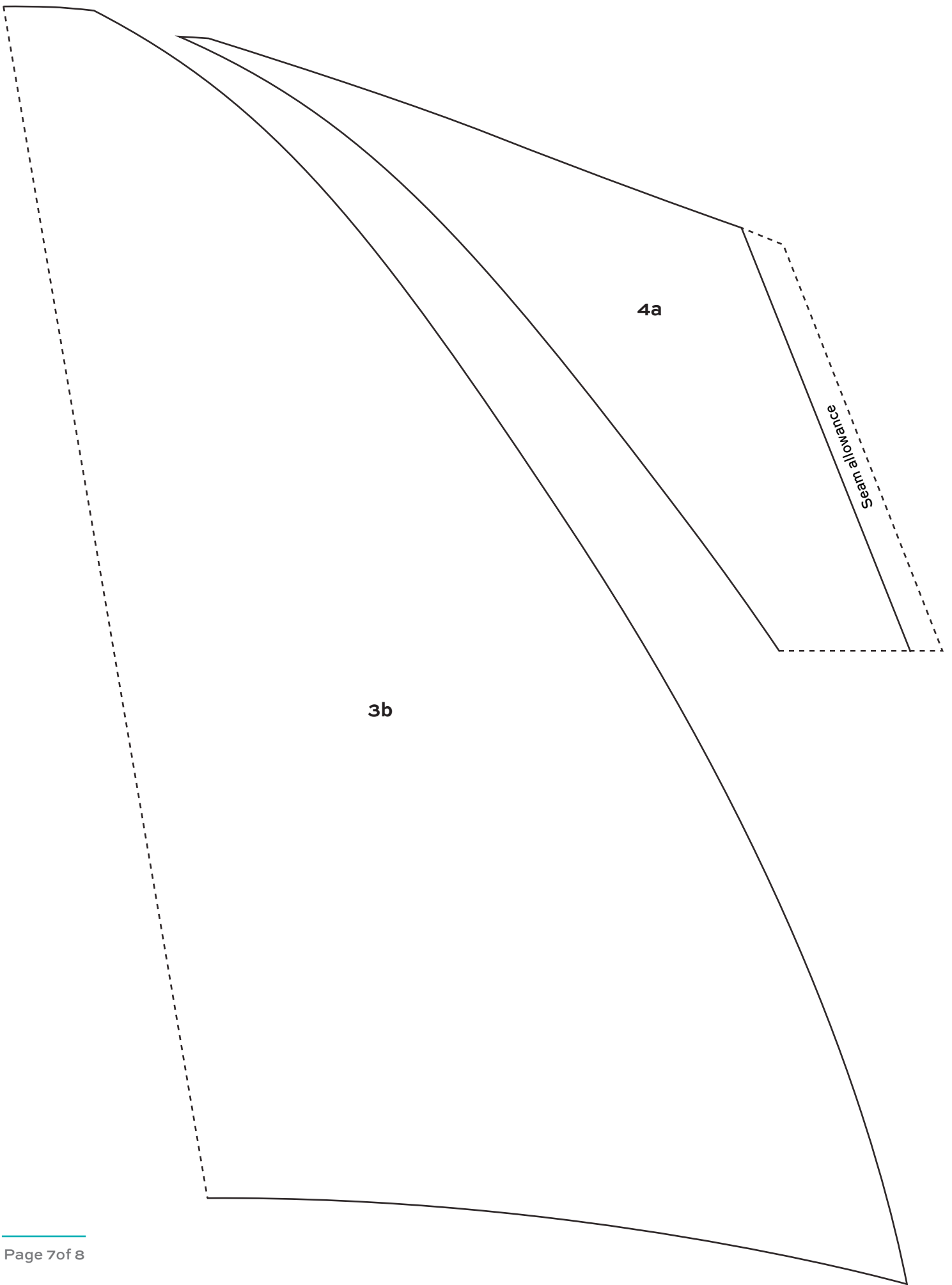






8

3a



Low Tide

FABRICS BY JANE DIXON



7551-G*



7551-K*



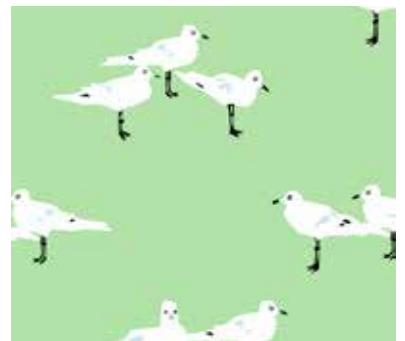
7554-C*



7552-G*



7552-K



7554-G*



7553-C



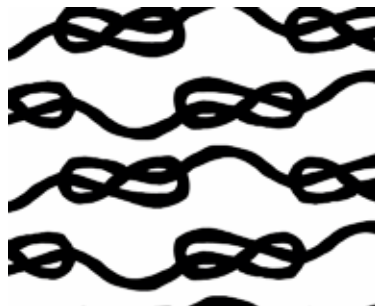
7553-K*



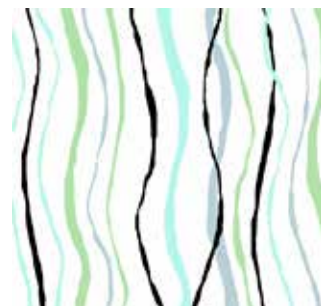
7554-V



7555-C



7555-K*



7556-C*



7556-K*

*Indicates fabrics used in quilt pattern. Fabrics shown are 20% of actual size.

andover



makower uk
The Henley Studio

Free Pattern Download Available

1384 Broadway New York, NY 10018
Tel. (800) 223-5678 • andoverfabrics.com